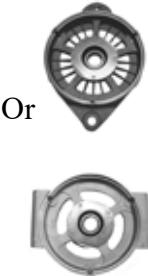












| | | |
|--------|-------------------------------|--|
| Group: | 4000 Remote Rect-Reg | Notes: |
| Form: | SP1014-4000-Remote | Refer to SP1014-DWG-Remote-rect-reg for parts breakdown. Refer to TSB-3015 for hardware kit breakdown. |
| Date: | August 7, 2018 | |
| File: | Alternator Parts List Section | |

| Component View | Front Housing Spacer, bearing, retainer | Rotor | Rear Housing, bearing | Stator | Rectifier Heatsink Negative | Brush Box |
|--------------------------------|---|---|---|--|---|---|
| | Or  |  | Or  |  |  |  |
| Model | 1 | 2 | 3 | 4 | 5 | 6* |
| Sales # 4840AAH A0014840AAH | A014103469S | A020103462S | A011104778S | A022103463S | A967079978S | A009097082S |
| A0014841PAH OE # 3606039C92 | A014103584S | A020103462S | A011103695S | A022103463S | A967079978S | A009097082S |
| Sales # 4850AA A0014850AA | A014103584S | A020096898S | A011104780S | A022103487S | A967079978S | A009097082S |
| Sales # 4852AA A0014852AA | A014079009S | A020096898S | A011104780S | A022103503S | A967079978S | A009097082S |
| Sales # 4854AA A0014854AA | A014079009S | A020100824S | A011104780S | A022103503S | A967079978S | A009097082S |
| Sales # 4856AA A0014856AA | A014079009S | A020101890S | A011104780S | A022103502S | A967079978S | A009097082S |
| Sales # 4892AA A0014892AA | A014103866S | A020102833S | A011104780S | A022102689S | A967079978S | A009097082S |
| Sales # 4909AA A0014909AA | A014103232S | A020104881S | A011103695S | A022102689S | A967079978S | A009097082S |
| Sales # 4941PGH A0014941PGH | A014103584S | A020103462S | A011104140S | A022103463S | A967079978S | A009097082S |

* See SP1014-DWG for details on items.




Important: The information contained in this bulletin is intended for use by trained, professional technicians who have the proper tools, equipment, and training to perform the required maintenance described above. This information is NOT intended for 'do-it-yourselfers', and you should not assume that this information applies to your equipment. If you have any questions regarding this information please visit our website at www.prestolite.com, or contact our technical service department at:

| | | |
|--------|-------------------------------|--|
| Group: | 4000 Remote Rect-Reg | Notes: |
| Form: | SP1014-4000-Remote | Refer to SP1014-DWG-Remote-rect-reg for parts breakdown. Refer to TSB-3015 for hardware kit breakdown. |
| Date: | August 7, 2018 | |
| File: | Alternator Parts List Section | |

| Component View | Fan | Regulator or Cover | Rectifier Heatsink Positive | Overhaul Kit Bearings, slip ring, O-ring, brush holder | Hardware Kit |
|--------------------------------|---|---|---|--|---|
| |  |  |  |  |  |
| Model | 7 | 8 | 9 | | |
| Sales # 4840AAH A0014840AAH | A041102967S | A038100265S | A967079977S | K183104745S | K212104775S |
| A0014841PAH OE # 3606039C92 | A041102967S | A038100265S | A967079977S | K183104737S | K212104775S |
| Sales # 4850AA A0014850AA | A041102967S | A038100265S | A967079977S | K183104744S | K212104775S |
| Sales # 4852AA A0014852AA | A041102967S | A038100265S | A967079977S | K183104744S | K212104775S |
| Sales # 4854AA A0014854AA | A041102967S | A038100265S | A967079977S | K183104744S | K212104775S |
| Sales # 4856AA A0014856AA | A041102817S | A038100265S | A967079977S | K183104744S | K212104775S |
| Sales # 4892AA A0014892AA | A041102967S | A038100265S | A967079977S | K183104744S | K212104775S |
| Sales # 4909AA A0014909AA | A041102967S | A038100265S | A967079977S | K183104737S | K212104775S |
| Sales # 4941PGH A0014941PGH | A041102967S | A038100265S | A967079977S | K183104737S | K212104775S |

Important: The information contained in this bulletin is intended for use by trained, professional technicians who have the proper tools, equipment, and training to perform the required maintenance described above. This information is NOT intended for 'do-it-yourselfers', and you should not assume that this information applies to your equipment. If you have any questions regarding this information please visit our website at www.prestolite.com, or contact our technical service department at:

| | | |
|--------|-------------------------------|--|
| Group: | 4000 Remote Rect-Reg | Notes: |
| Form: | SP1014-4000-Remote | Refer to SP1014-DWG-Remote-rect-reg for parts breakdown. Refer to TSB-3015 for hardware kit breakdown. |
| Date: | August 7, 2018 | |
| File: | Alternator Parts List Section | |

| Component View | AC Strap | Terminal Mounting Pad | Pulley |
|--------------------------------|---|---|---|
| |  |  |  |
| Model | 16 | 17 | |
| Sales # 4840AAH A0014840AAH | K185104777S | A263101333S | N/A |
| A0014841PAH OE # 3606039C92 | K185104777S | A263101333S | N/A |
| Sales # 4850AA A0014850AA | K185104777S | A263101333S | N/A |
| Sales # 4852AA A0014852AA | K185104777S | A263101333S | N/A |
| Sales # 4854AA A0014854AA | K185104777S | A263101333S | N/A |
| Sales # 4856AA A0014856AA | K185104777S | A263101333S | N/A |
| Sales # 4892AA A0014892AA | K185104777S | A263101333S | N/A |
| Sales # 4909AA A0014909AA | K185104777S | A263101333S | N/A |
| Sales # 4941PGH A0014941PGH | K185104777S | A263101333S | N/A |

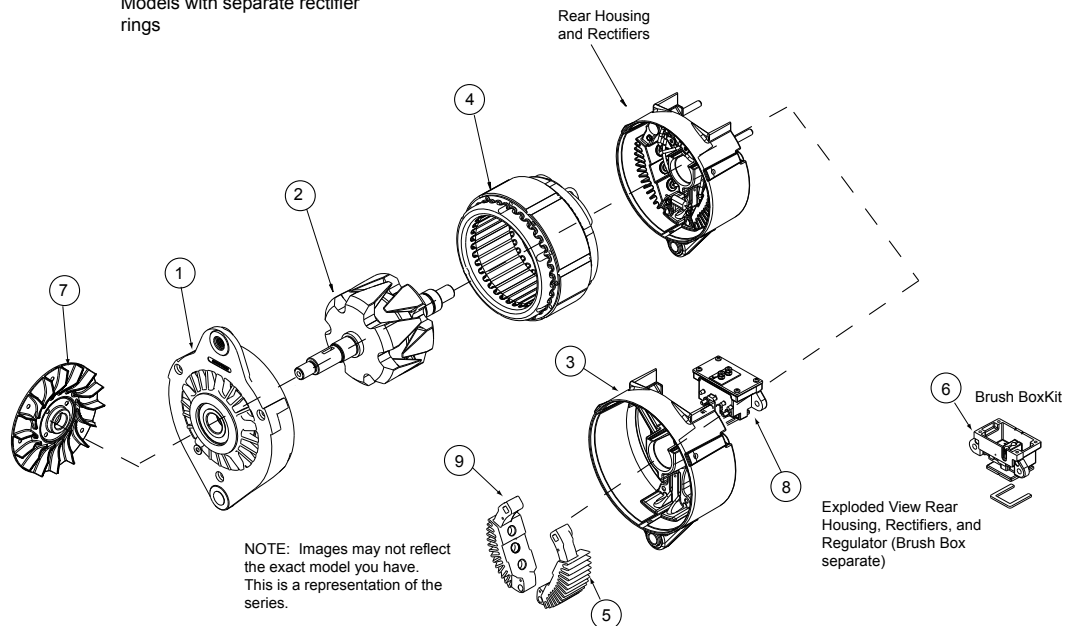
| Component View | Brush Kit |
|----------------|---|
| |  |
| Model | |
| All Models | K185104697S |

Important: The information contained in this bulletin is intended for use by trained, professional technicians who have the proper tools, equipment, and training to perform the required maintenance described above. This information is NOT intended for 'do-it-yourselfers', and you should not assume that this information applies to your equipment. If you have any questions regarding this information please visit our website at www.prestolite.com, or contact our technical service department at:

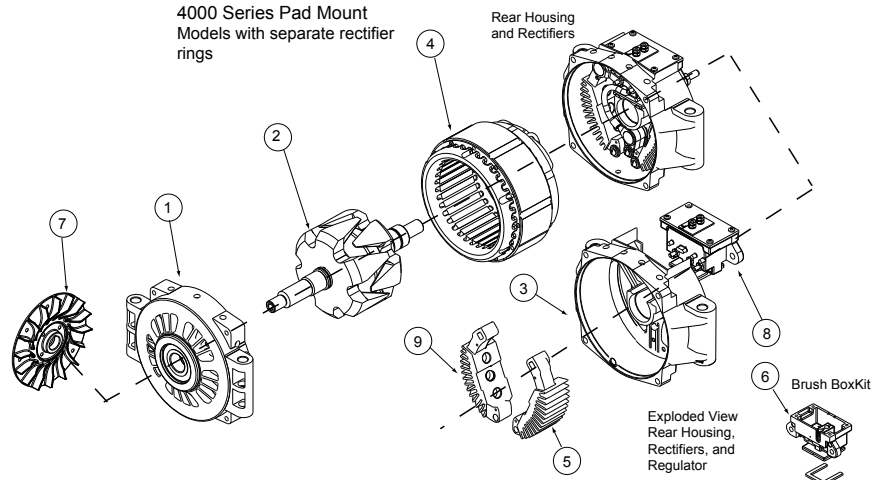
| | | |
|--------|-------------------------------|---|
| Group: | 4000 Remote Rect-Reg | Notes: |
| Form: | SP1014-DWG | Refer to SP1014-4000-Remote-rect-reg for parts breakdown. Refer to TSB-3015 for hardware kit breakdown. |
| Date: | JULY 7, 2017 | |
| File: | Alternator Parts List Section | |

This service parts list covers alternators that are remote rectified and remote regulated models.

4000 Series J180 Mount
Models with separate rectifier
rings



4000 Series Pad Mount
Models with separate rectifier
rings



See TSB-3015
for Hardware Kit
breakdowns

Important: The information contained in this bulletin is intended for use by trained, professional technicians who have the proper tools, equipment, and training to perform the required maintenance described above. This information is NOT intended for 'do-it-yourselfers', and you should not assume that this information applies to your equipment. If you have any questions regarding this information please visit our website at www.prestolite.com, or contact our technical service department at:

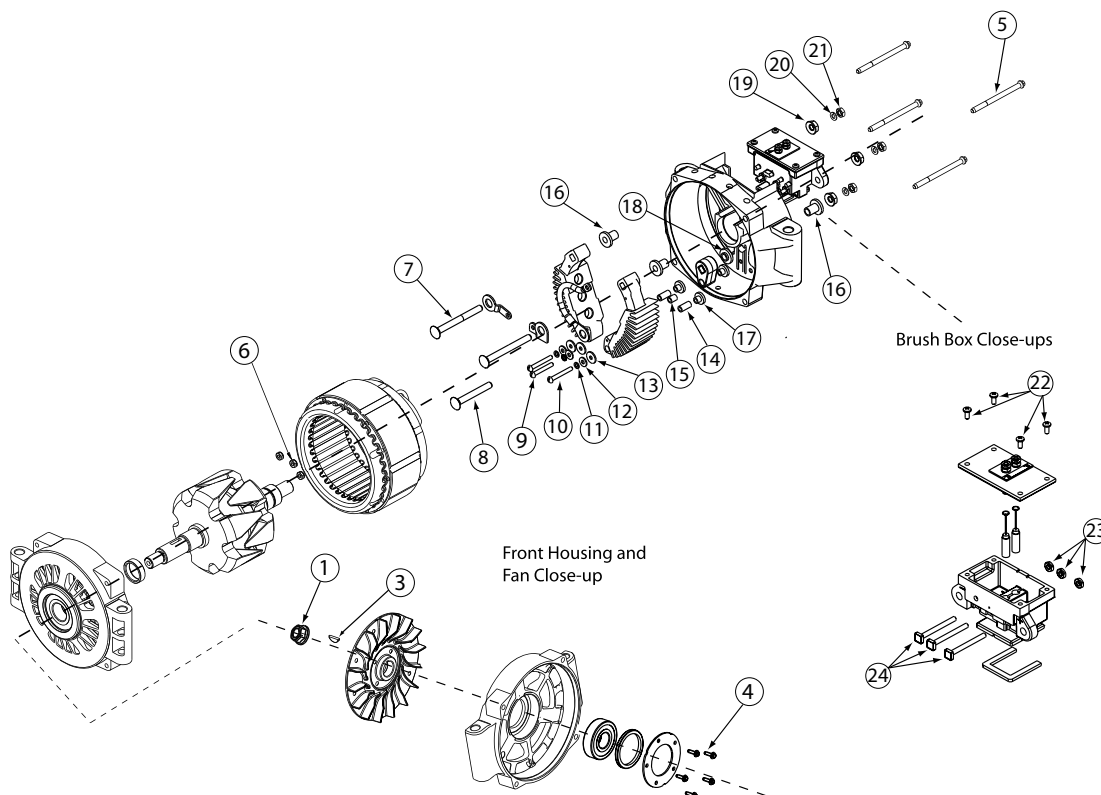
Source: Leece-Neville Heavy Duty Systems Division - Arcade, NY USA
Date: JULY 7, 2017
Bulletin No: TSB-3015
Models: 4000 Series Without Regulators / Rectifiers
Subject: Hardware Kit for 4000 series T-mount alternators K212104775S for AA series units without regulator.

K212104775S

Illustration and key numbers for 4000AA Pad Mount models.

NOTE: All of these components are part of the hardware kit and not available for individual purchase.

4000AA Series Pad Mount



Important: The information contained in this bulletin is intended for use by trained, professional technicians who have the proper tools, equipment, and training to perform the required maintenance described above. This information is NOT intended for 'do-it-yourselfers'; and you should not assume that this information applies to your equipment. If you have any questions regarding this information please visit our website at www.prestolite.com, or contact our technical service department at:

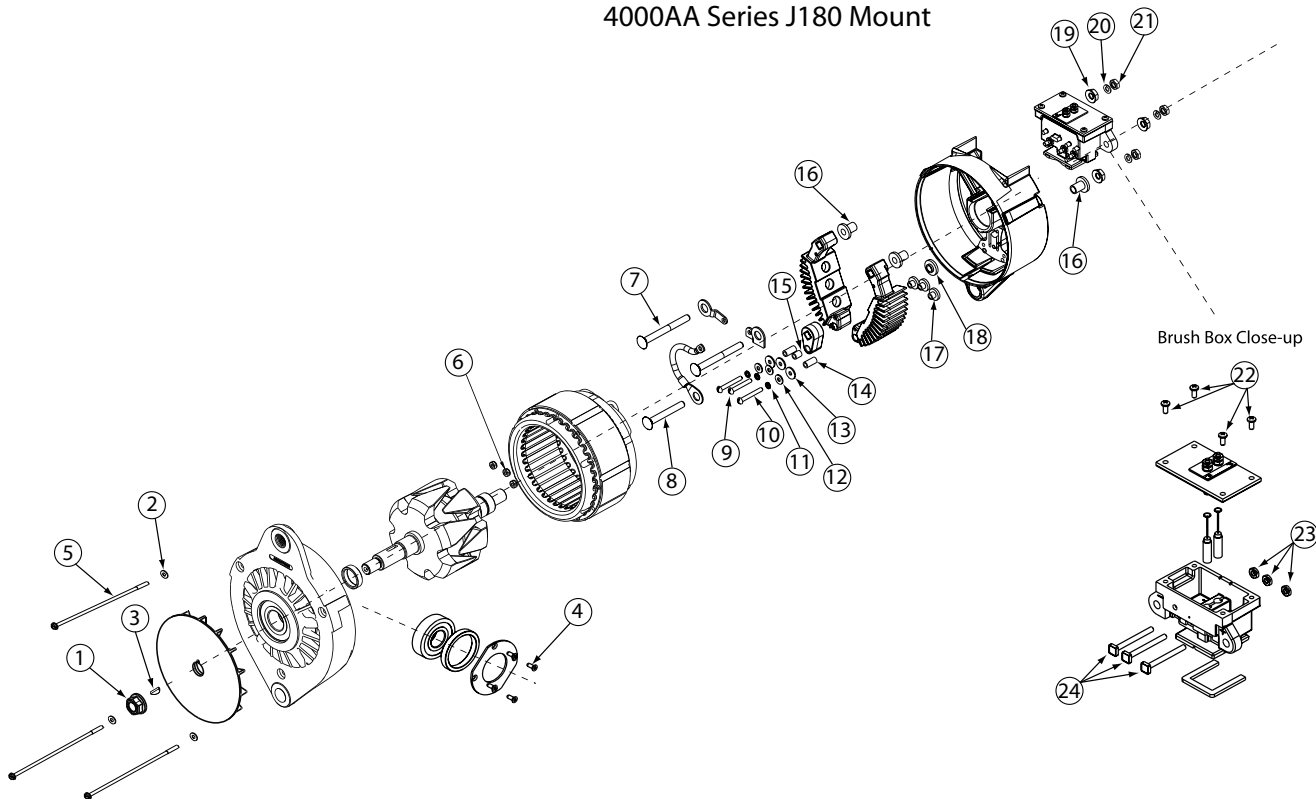
Date: JULY 7, 2017

Bulletin No: TSB-3015

Illustration and key numbers for 4000AA J180 Mount models.

NOTE: All of these components are part of the hardware kit and not available for individual purchase.

4000AA Series J180 Mount



Important: The information contained in this bulletin is intended for use by trained, professional technicians who have the proper tools, equipment, and training to perform the required maintenance described above. This information is NOT intended for 'do-it-yourselfers', and you should not assume that this information applies to your equipment. If you have any questions regarding this information please visit our website at www.prestolite.com, or contact our technical service department at:

Date: JULY 7, 2017

Bulletin No: TSB-3015

| Description | Qty. | Key | Where used |
|------------------------|------|-----|---|
| NUT, 5/8-18, LOCK | 1 | 1 | Fan Nut |
| WASHER, FLAT#10 | 3 | 2 | Thru-Bolt flat washer |
| KEY, WOODRUFF #8 | 1 | 3 | Shaft key |
| SCREW, THREAD FORMING | 4 | 4 | Front housing retainer plate holding screw |
| SCR TPG 10-32X.62 1/4H | 5 | 4 | Front housing retainer plate holding screw |
| THRU.BOLT #10-32 | 3 | 5 | Thru-Bolts holds Alternator together |
| BOLT, THRU 1/4X20 4.12 | 4 | 5 | Thru-Bolts holds Alternator together |
| BOLT, THRU 1/4X20 3.50 | 4 | 5 | Thru-Bolts holds Alternator together |
| NUT | 3 | 6 | Hold stator leads brush box |
| BOLT 5/16 X 3-1/4" | 2 | 7 | AC bolt |
| BOLT 5/16 X 2-1/2" | 1 | 8 | AC bolt |
| SCREW #10 X 1-3/8" | 1 | 9 | Attaches AC bolt holder to alternator rear housing. |
| Screw | 2 | 10 | Attaches rectifier heatsink to rear housing. |
| LOCKWASHER | 3 | 11 | Lockwashers for bolts that attach AC bolt holder and rectifier heatsink |
| WASHER FLT.203-.500-.0 | 3 | 12 | Flatwashers for bolts that attach AC bolt holder and rectifier heatsink |
| Washer | 3 | 13 | Insulating washer for bolts that attach AC bolt holder and rectifier heatsink |
| Bushing | 2 | 14 | Insulating bushing for bolts that attach rectifier heatsink |
| BUSHING, INSULATION | 1 | 15 | Insulating bushing for bolt that attach AC bolt holder to alternator rear housing |
| Bushing | 3 | 16 | Insulating bushing for AC bolts |
| Bushing | 3 | 17 | Insulates rectifier heatsinks from alternator rear housing |
| Bushing | 1 | 18 | Insulates AC bolt holder from alternator rear housing |
| NUT, TENZ - 5/16-18 | 3 | 19 | Secure AC bolts to rear housing |
| LOCKWASHER | 3 | 20 | Lockwasher for customer cables |
| HEX NUT | 3 | 21 | Nut to attach customer cables |
| SCREW | 4 | 22 | Screws that attach remote regulator cover |
| NUT, STEEL #10-32 | 3 | 23 | Nuts that hold AC taps in brush box |
| Stud | 3 | 24 | AC bolt |

Important: The information contained in this bulletin is intended for use by trained, professional technicians who have the proper tools, equipment, and training to perform the required maintenance described above. This information is NOT intended for 'do-it-yourselfers'; and you should not assume that this information applies to your equipment. If you have any questions regarding this information please visit our website at www.prestolite.com, or contact our technical service department at: